

Internal Wall Installation

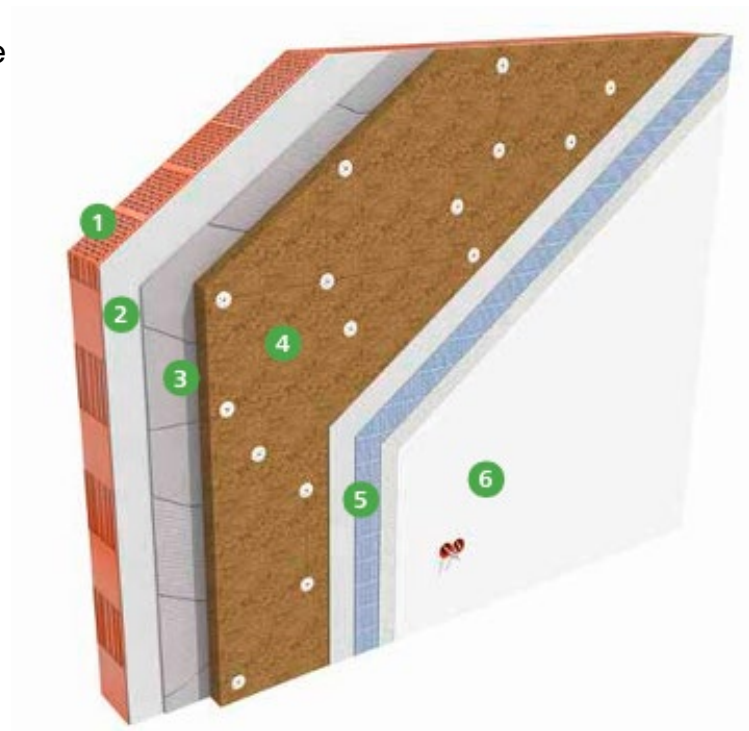
What to Expect?

■ What is Internal Wall Insulation – IWI?

Internal Wall Insulation (IWI) involves fitting insulation material to the inner surfaces of a building's external walls. Using the Wood Fibre system.

■ What materials are used?

It typically uses rigid insulation boards or stud walls filled with insulation material.



■ What are the benefits of IWI?

IWI improves energy efficiency by reducing heat loss, enhances thermal comfort, and helps cut heating costs.

■ Why am I having this done?

We are working with your housing association to support their decarbonisation goals. This means updating homes with more energy-efficient products. This process is called Retrofit.

Is it quite disruptive?

...

This measure can be quite disruptive but not for long, only a few days, depending on the size of your home and the number of rooms being treated. During this time, please allow for some drying and settling of the materials used. Avoid placing heavy items or furniture directly against the walls until the installation is fully complete. Our team will always try to minimise disruption and work with you and your needs.

What is the installation process?

■ Step 1 – Assessment

Your property will have undergone a retrofit assessment. This allows the team to come and see your property so they can design your specific cavity wall insulation. These will be shown to you before work starts.

■ Step 3 – On the day: Checking and preparing the substrate

The installer will check the surface areas of the walls to make sure they are clean, firm, dry and flat.

■ Step 5 – Board processing

The installer will then measure up the correct length and width of the insulation boards.

■ Step 7 – Mechanical fasteners

The installer will then skew in a carefully mapped-out pattern with insulation fasteners and then sand the surface, so everything sits flush.

■ Step 2 – Installation booked

An installation date will be agreed upon at your convenience.

■ Step 4 – Levelling the substrate

If the walls are bumpy, they will level it out by using insulation plaster. It will then need a day to dry fully.

■ Step 6 – Bonding the boards

Using a bonding material, a bonding coat will be applied to the wall first then to the board, so it can be positioned in the correct place. This will take 24 hours to dry.

■ Step 8 – Plaster coats

A base layer of insulation plaster will be applied, and a reinforcement mesh will be positioned so it sets into the plaster. This layer will take a day to dry fully. Once dried, the topcoat will be used to finish the wall.

■ Handover Pack

You will be given a full product specification guide upon completion, showing how to use and maintain your new energy-efficient products, and contact details if you have any issues.

How do I care for my IWI?

IWI will require minimal maintenance. However, you should avoid drilling or nailing into the walls unless necessary, as this could damage the insulation.