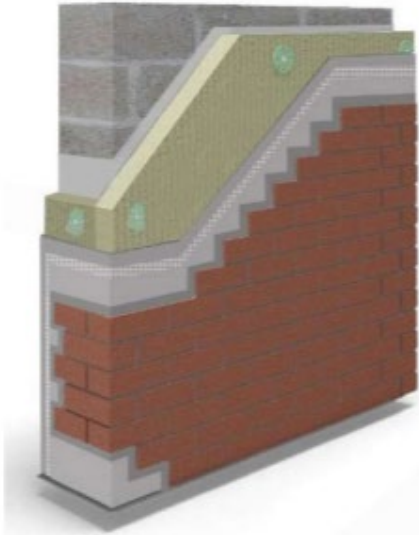


External Wall Installation

What to Expect?



■ What are the **benefits** of EWI?

EWI improves energy efficiency by reducing heat loss, enhances thermal comfort, and minimises condensation issues. EWI also upgrades your home's external appearance and protects the structure from weathering

■ **Why** am I having this done?

We are working with your housing association to support their decarbonisation goals. This means updating homes with more energy-efficient products. This process is called Retrofit.

Adding insulation material onto the outside of your home helps to retain the heat on the inside and reduces the amount of fuel you'll need to burn to keep warm, resulting in reduced heating bills.

■ What is **External Wall Insulation – EWI**?

External Wall Insulation or EWI is a system that involves adding layers of insulation material to the outside of a building's wall, which is then covered with protective layers.

■ What **materials** are used?

For EWI, the materials used usually comprise of insulation boards, impact-resistant basecoats with embedded glass fibre mesh, render, dry dash or Brick slip finish.

Is it quite disruptive?



There shouldn't be much disruption when installing EWI. There may be times when you will hear drilling noises as the team drills holes into the walls to accommodate fixing anchors, and only during working hours. Our team will always try to minimise disruption and work with you and your needs.

What is the installation process?

Our highly experienced EWI contractors will only need to work outside of your home.

Depending on the type of property, you may need to have scaffolding put up for this work to be completed.

■ Step 1 – Assessment

Your property will have undergone a retrofit assessment. This allows the team to come and see your property so they can design your specific External wall insulation. These will be shown to you before work starts.

■ Step 2 – Installation booked

An installation date will be agreed upon at your convenience.

■ Step 3 – On the day

Thermally efficient insulation boards are securely fixed, using a drill and fixing anchors, to the external walls of your property.

■ Step 4 – One the day

A basecoat of polymer cement will be applied to the insulation boards and a reinforced mesh will be embedded into this cement. Extra reinforcement will be added at corners and around openings.

■ Step 5 – On the day

The chosen render, dry dash or brick slip finish will then be applied as the final layer.

How do I care for my EWI?

EWI is usually maintenance-free under normal conditions. The render and insulation system should be durable and weather resistant. However, it's important to avoid using harsh cleaning products on the external walls. Regularly check for any areas where dirt or debris may have built up, and gently clean with water if necessary. Avoid power washing the walls, as this could damage the finish.

■ Handover Pack

You will be given a full product specification guide upon completion, showing how to use and maintain your new energy-efficient products, and contact details if you have any issues.