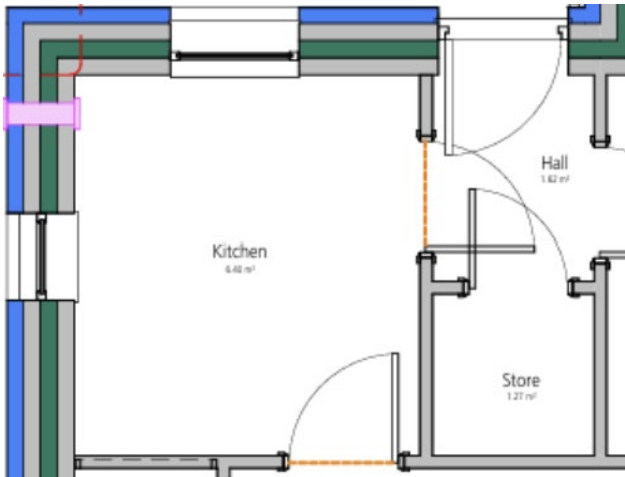


Door Undercuts

What to Expect?



Internal door to be provided with suitable undercut for ventilation.

■ What is a Door Undercut?

A door undercut is the distance between the bottom of the door and the floor or door frame.

A typical door undercut is around $\frac{3}{4}$ inch (19mm), but it can vary depending on specific needs, such as the type of flooring or the door's function (e.g., fire-related doors may have specific clearance requirements).

■ What is the process?

■ Step 1 – Measuring the desired height

The installer will measure and mark the desired height as per property specifications.

■ Step 2 – Undercut

An installation date will be agreed upon at your convenience.

■ Step 2 – Clean up & testing

The installer will make sure all dust and debris are cleaned up and will test that the door operates smoothly without obstruction.

■ Why am I having this done?

A door undercut is a practical modification that enhances the functionality of doors and improves air circulation.

■ What are the benefits?

The door undercut has several important benefits:

- 1. Airflow and Ventilation:** Improving the air circulation between rooms, which is essential for maintaining temperature balance and controlling moisture, to prevent mould, and enhances overall indoor air quality.
- 2. Flooring clearance:** Allowing the door to open and close smoothly without dragging on the floor.
- 3. Pressure Balancing:** In some cases, undercuts can help balance air pressure between rooms.

Is it quite disruptive?

Door undercuts will have minimal disruption to you and your surroundings.